

Vegetative Electro-Physiological Reactions & Compensation

Scientists have found a way to measure magnetic vortexes (Non Linear Signals [that is circular signals]) throughout the human body and reference these results against data that has been collected from healthy and sick people alike over many decades - known as NLS-Diagnostics.

The results are outstanding, for the first time in human history we can scan the body accurately (96% success rate in clinical trials) and find disease processes in play as well as the level of distortion (Homeostasis breakdown) of Systems, Organs, Tissues and cells.

With this information one can then go about identifying the disease process (Etalon) with the option of correcting and supporting the human body to return to Homeostasis (good health [internal equilibrium]).

The following information comes from various sources which includes our training for certification for use of such a machine (Sensitiv IMAGO), in-clinic use with successes over many years, the Internet where different disciplines have touched on magnetic vortexes as well as detailed analysis of several registered patents dealing with NLS technology.

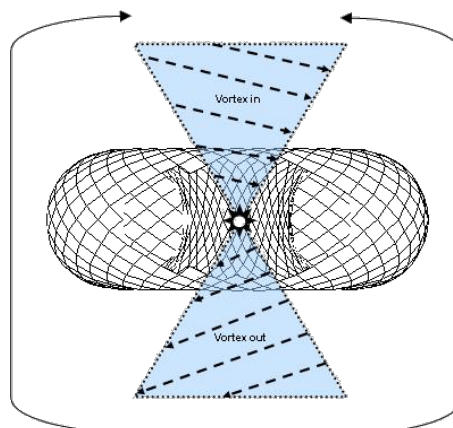
Please note, corporations who have commercially implemented devices based on this technology are very sensitive to discussing the inner workings of their machines and thus comprehensive information on this subject is scarce.

The core principal used is **Quantum** (sub atomic) **Entropy** (tendency for all matter and energy in the universe to evolve toward a state of inert uniformity [eg. the Universe is

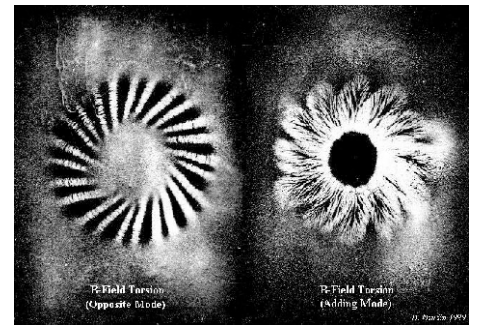
cooling down and heading towards 0 Kelvin {-275 Celsius}). Life, which requires the building and maintaining of information and structure, is the reverse to entropy.

An illustration that comes to mind: Imagine you have just bought a freshly brewed take away hot cup of coffee. Left on the office desk without drinking, the first stage of entropy is that the vibrating atoms in the fluid which produce the heat slow down and the drink gradually becomes cold, further, over time the cool mixture slowly separates. Given enough time the bean slurry settles on the bottom of the cup, the milk sours or curdles and floats to the top – we are seeing entropy at work, given enough time, not only will the water evaporate, even the polystyrene cup will break down under ultra violet light and crumble away.

So the key to diagnosis relating to health is to read the current state of the biological process using Quantum Entropy references against a repository of knowledge. When measuring magnetic vortexes, what has been observed is that vortexes with a right spin (North magnetic Field) take on information and in the process their structures build and stabilise, whereas, vortexes with a stronger left spin (South magnetic Field) loose information, breakdown and collapse.



Therefore stable systems are controlled by information, which makes sense then that, if the information is leaking away, left spin vortex (South magnetic Field), this will cause the controlled structure to collapse, become unstable and break down. During the breakdown process orderliness is replaced by noise and distortion.



A 69 year old lady who had suffered for many years with all sorts of heart troubles succumbed to a major heart attack and was hospitalised. After many tests including a CT Angiogram, her Heart Specialist broke the news to her that her arteries were 75% blocked (calcified) in her body and that it was impossible to perform any type of by-pass surgery, nor was it possible to use any type of stent as too many of her arteries were clogged. She was dosed up on blood thinners, encouraged to get her affairs in order and basically sent home to die.

Her CT scans showed:-

Stenosis (intermediate) 50-75% within the RCA and PDA.

Stenosis (moderate) 50% LAD circumflex and major branch arteries.

Stenosis: Abnormal Narrowing in the Blood Vessels.

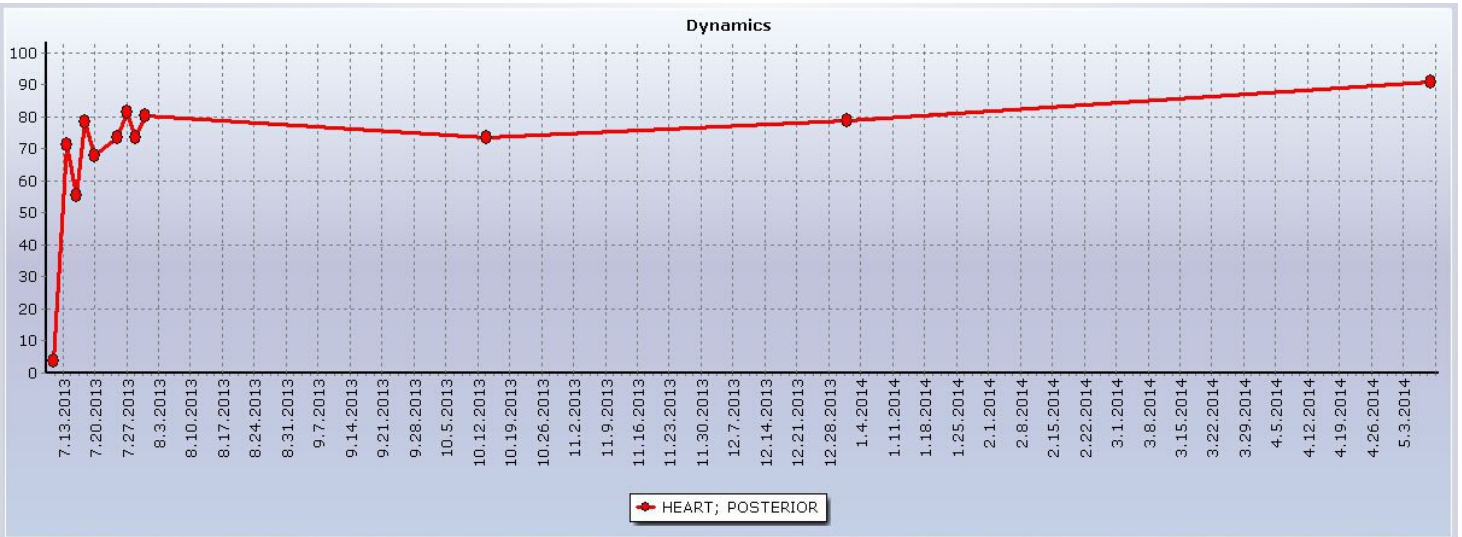
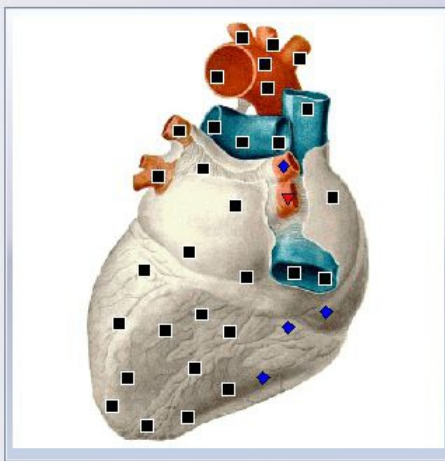
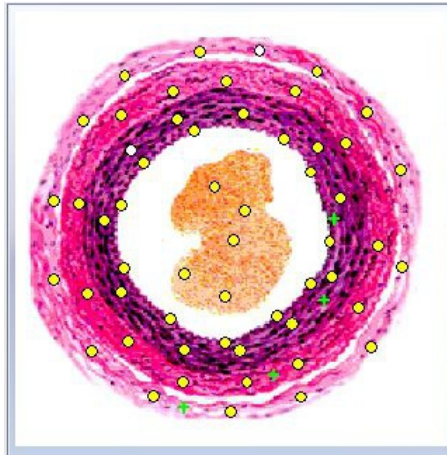
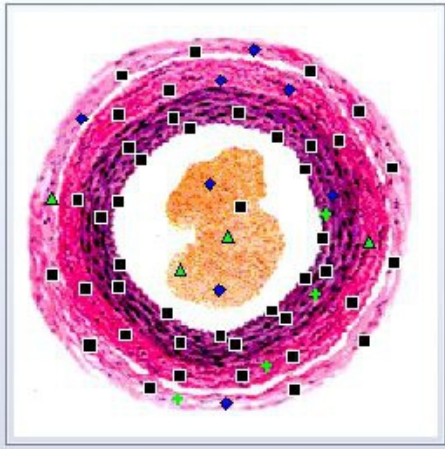
RCA: Right Coronary Arteries
LAD: Left Anterior Descending
PDA: Patent Ductus Arteriosus

Not giving up she sought out an IMAGO Practitioner to see if anything could be done.

Her initial IMAGO Scans confirmed the Homeostasis imbalances in her cardiovascular system.

the plaque and calcium build up.

The Spectrograms below show the current status of her Arterial Wall and Heart Posterior Homeostasis.



The chart tracks her progress from the very first scan and subsequent treatments which included Bio-Resonance Therapy (BRT) and MORA Therapy. Both administered from the IMAGO, plus additional supplementary Enzyme Therapy that helped aide the dissolving of

Today she follows through with a maintenance program designed to control plaque build up and maintain energy levels in her heart.

Submitted by A. Hill
Axfite Pty Ltd, Australia
www.axfite.com.au

Axfite Pty Ltd - Australia
www.axfite.com.au
+61 41 963 9001
Scan, Analyse, Treat

Practitioner Health Equipment (diagnostic & thermal) "Sensitiv IMAGO" Vegetative Electro-Physiological Reactions & Compensation

High Grade Supplements Clinic